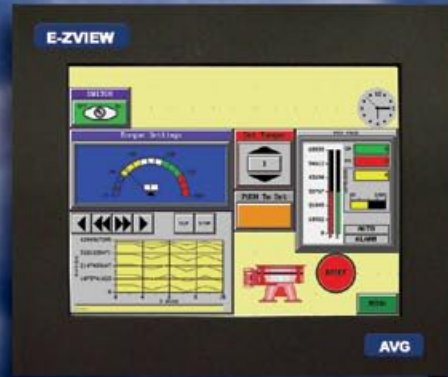


# E-ZView™

- Quick Time to Market
- FREE EZ as 1-2-3 Editor Off the Web
- Seamless Integration with Z-World
- Advanced HMI Functionality
- Very Cost Effective



THE MOST PRACTICAL

# TOUCH PANELS

FOR

# EMBEDDED CONTROLLERS

STARTING AT  
**\$459**  
WITH  
**FREE**  
EZVIEW  
Programming Software



E-Z TO USE TOUCH PANELS FOR Z-WORLD CONTROLLERS

2004-2005 E-ZView Product Catalog

# AVG and its Operator Interface Products

## A Brief Overview...

AVG, an American Group of companies, is vertically integrated to design and manufacture state of the art electronic products, cost effectively, for the best Return On Investment for our customers.

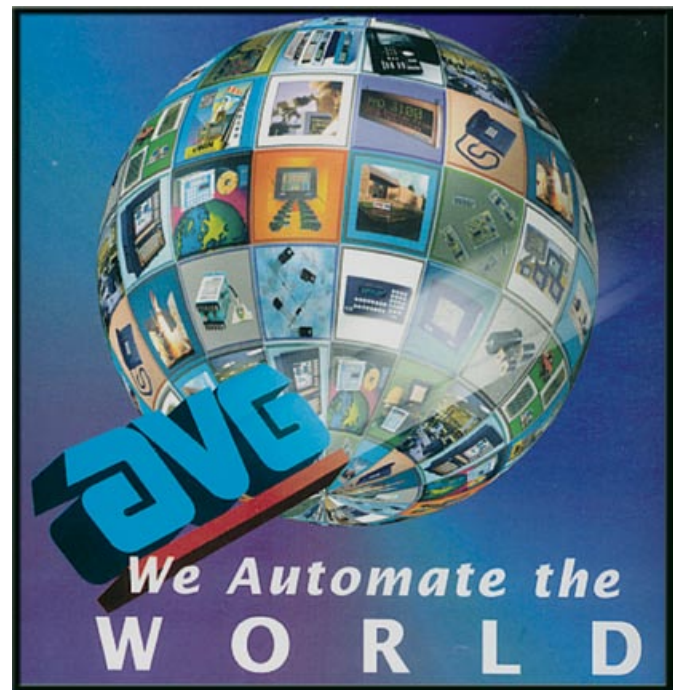
## Significant Highlights & Core Competencies...

- Established in 1975, AVG has introduced more than 500 innovative new products.
- Extensive hardware, firmware, & software design capability, in Illinois & Iowa.
- Hold 20+ Patents & 7 New Pending
- Has an installed base of over \$1 Billion in fortune 500 companies such as Ford, GM, P&G, Abbot, Miller, & IBM.
- PCB fabrication.
- 3 EMS Plants for Complete Turn Key Assembly & Box Build.
- Thick Film Hybrids.
- One of the largest semi-conductor FABs.
- Known for "Uticor Tough," High Reliability, HALT-HASSed Products, designed to operate in harsh industrial environments.
- In the fore-front of High Technology such as BGA and controlled impedance high density board products.



Industry  
Leadership

AVG Products are featured on the front cover of New Equipment Digest and IAN.



First established in 1968 as Struther Dunn's Systems Division, UTICOR became part of AVG in 1995. In the early 1970s Uticor began pioneering patented work on PLCs, which were used widely for welding controls in automotive plants. In collaboration with Ford, Uticor performed fundamental research on welding controls.

Uticor products have earned a reputation for being highly reliable & robust while performing very well in the harshest industrial environments. The industry recognizes this by calling Uticor products "Uticor Tough," and by acknowledging that the Uticor products are "built like a tank."

These "Uticor Tough" products are enhancing productivity in several Fortune 500 companies, such as GM, FORD, Chrysler, Kimberley-Clark, Miller Brewing, etc.

**The same "Uticor Tough" products are now offered by AVG's Industrial Display division at very attractive prices for the Embedded Control market.**

**"The Most Practical Touch Panels for Embedded Controllers"**

# The E-ZView Touch Panel

## E-Z to use Touch Panels for Z-World Controllers

Fueled by the Palm Pilot revolution, Touch Panels are increasingly used in all kinds of machines in a variety of industries such as industrial automation, medical electronics, telecommunication, automotives, aviation, entertainment, gaming, point of sale, security and numerous others. AVG introduced its first Touch Panel in 1993 and has maintained a leadership position as a supplier of the most practical touch panels in business.

Starting in 1999, AVG invested over 100,000 engineering hours with a cost of about 3 million dollars in developing the best in class touch panel for its industrial automation customers. Since the introduction of these panels in 2001 under the brand name E-ZTouch and PowerPanel, **over 10,000 customers** have fallen in love with the **Ease of Use** of the AVG panels.

### “AVG Panels for the PLC Market...”

**EZ TOUCH – the most practical PLC touch panel available!**

**1** The easiest configuration software to use

**2** 1/2 the price of leading brands

**3** FREE service voted #1 in the industry

SERIAL DRIVERS for most popular PLCs or NETWORK OPTIONS for Data Highway Plus, MODBUS TCP/IP, Ethernet IP, DeviceNet, Profibus, MODBUS Plus

192 TOUCH CELLS

HUGE 15" TOUCHSCREEN

128 COLORS ON OBJECTS AND SCREENS

BRIGHT, CRISP AND CLEAR TFT DISPLAY

6 inch units starting at \$460 EZ-S6M-RS

If you are looking for a touch panel that will save you time and money, our EZ Touch line is here to help. For example, check out the latest 15 inch models. This large panel series quickly connects to most popular PLCs, and starts at the low price of \$2,999. Look at the comparison chart and you'll see that the cost of purchasing our 15" model (with software and cable) is less than buying just the 10" inch panel from another vendor! Need an even lower price? Check out our 10", 8", and 6" units.

We ship all in-stock orders the same day. And, we back up everything we sell with a 30-day satisfaction guarantee. Best of all, EZ Touch products are supported by AutomationDirect service, which has been voted #1 in the industry three years in a row by Control Design magazine readers. Call for your free catalog or go online and learn all about our EZ Touch panels.

Designed and built by **AVG**  
www.avg.net

**Here is what some of these 10,000 customers have to say about the AVG panels:**

- Director of Engineering of the largest manufacturer of Standby Power Generators: "Graphics, simplicity and Price are better than anything I have seen"
- Vice President of Operations of one of the largest system houses: "Excellent graphics, on-line programming is great and resizing of bit-mapped images is superb. Math functions are great."
- Director of Engineering of a Plastics material handling OEM with 60% market share: "Every three months a new interface company walks in but they are out of here in less than an hour. You, however, have done your home work. Let us order an evaluation unit."

### “... EZView Touch Panels for Embedded Controllers”

Now AVG is offering its Touch Panel technology to users of Embedded Controllers. We worked closely with Z-World to develop all the necessary software drivers and libraries to offer a seamless solution to the users of Single Board Computers using Rabbit processors. The E-ZView panel is not only the E-Ziest to use touch panel for the Z-World Embedded controllers, it has the most advanced features of any other panel in the market and is comprised of eight different models ranging from the 6" white on blue display to the 15" TFT display.

# E-ZView Operator Interface Products

With Seamless Integration with Z-World Controllers for Quick Time to Market

## Feature rich vast selection of Cost Effective Operator Panels

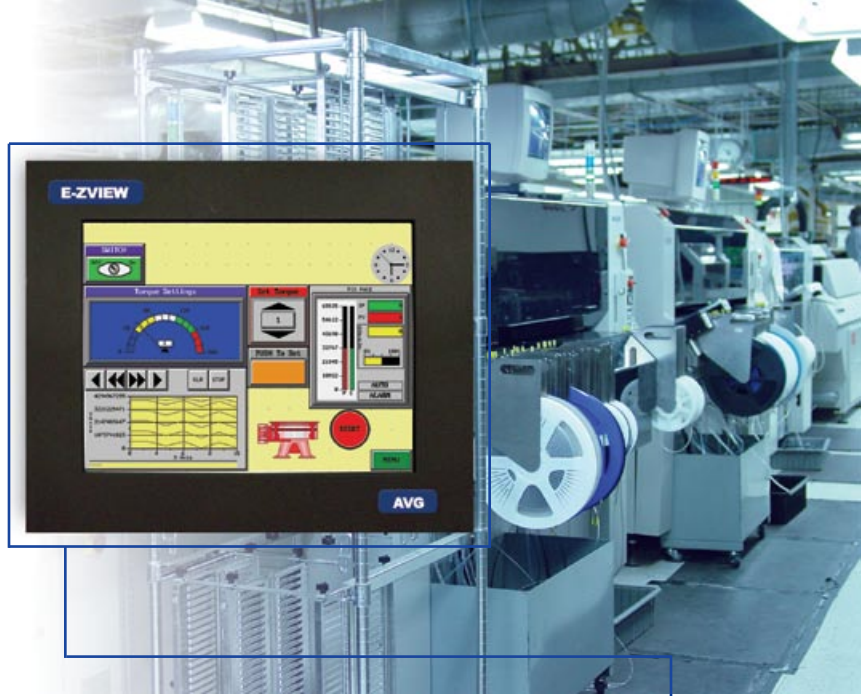
As you will see in the following pages, AVG's E-ZView panels have a superior feature set that allows the Embedded Controllers to do exactly that... Embedded control. E-ZView not only performs the traditional Graphical User Interface functions, it has wealth of intelligence in monitoring alarms and performing advanced math operations on any embedded control variables. It has pre-built statistical process control and downtime monitoring functions that will save the software programmer weeks of development time. E-ZView also comes in eight different display sizes (shown on back cover) to satisfy every need and all different price points.

## The Best Development Software, EZ as 1-2-3

In line with Z-World's strategy of making the development software easy to use to reduce product design time, E-ZView Editor has been designed to be the simplest software ever conceived. Coupled with its seamless integration with Z-World controllers, and utilizing the predesigned and fully tested communication driver, the E-ZView operator interface family of panels can reduce the development time to literally hours compared to weeks and months of writing and debugging thousands of lines of "C" code.

## Quality Technical Support

If you have technical questions and need expert answers, AVG provides technical support for both hardware and software issues. Our highly trained Technical Support Team is ready to assist you from 8:00 a.m. - 5:00 p.m., Central Time.



- **8 Different models to fit every budget starting from \$459**
- **Advanced Panel Objects with 2000 Symbol Library**
- **Advanced Math-Logic/Expressions**
- **Built-In Alarming, Recipes, Statistical Process Control Objects, Downtime Monitoring**
- **Free EZ as 1-2-3 Editor off the Web**
- **Remote Monitoring Over the Ethernet**
- **Flash Plug-in Module to Store User Application**
- **Seamless Integration with Z-World Controllers Rabbit Processors and Dynamic C**
- **Built-In Z-World Communication Driver**
- **NEMA 4 Out of the Box, NEMA 4X: Class 1, Div II and Stainless Steel Options**
- **Multiple Language Capability including Unicode**
- **Unique Online Programming for Quick Updates**
- **Private Label and Product Customization**

**"The Most Practical Touch Panels for Embedded Controllers"**



**T: 1.800.711.5109**  
(Mon-Fri, 8:00 a.m.-5:00 p.m., Central Time)  
**F: 563.359.9094**  
**E: EZViewsales@avg.net**  
**www.EZView.net**



## Ordering Information

AVG has worldwide representation through our direct sales department and a network of international distributors. International orders in countries with AVG distributors should be placed with these distributors. U.S. and Canadian customers may contact the AVG Sales Department directly.

Customers from any country may order on-line anytime. We fill and ship such orders through any authorized distributor or through AVG direct sales.

### Taxes

Unless otherwise indicated, all prices and charges exclude excise, sales, value added, use, property, or like taxes that may be imposed by any taxing authority upon the manufacture, sale or delivery of items sold by AVG.

### Payment

AVG accepts checks, money order, C.O.D., wire transfer, VISA, MasterCard, and American Express. Credit accounts may be opened after first purchase, upon credit approval. Credit accounts are net 30 days from the date of invoice with approved credit.

### Shipping and Delivery

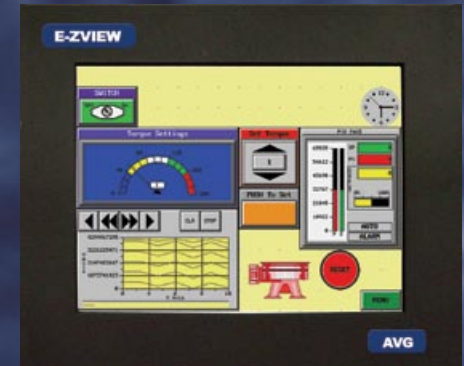
AVG's preferred carrier is UPS, though FedEx is also available. Standard delivery will be made F.O.B. (Free on Board, Origin). AVG makes every effort to fulfill its delivery commitments; AVG has no liability for any delays in delivery.

### 30-Day Money-Back Guarantee

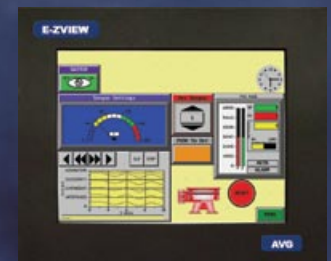
AVG products are backed by a 30-day, unconditional, money-back guarantee. Products may be returned for credit, exchange, or refund. A Return Material Authorization (RMA) number is required before returning any products to ensure their safe return. Products returned under this guarantee must be unmodified and in their original packaging. We reserve the right to refuse credit for any products that are damaged or not in original form. Volume orders are subject to restocking fees.

All orders are subject to AVG's standard terms and conditions of sale. A copy of our Standard Terms and Conditions is available on our website or by request.

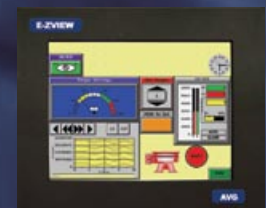
Visit Us at [www.E-ZView.net](http://www.E-ZView.net)



15" Color TFT



10" Color TFT



8" Color STN



6" Color STN

Complete Model Information  
on Back Cover

(800)711-5109

# Free E-ZView Development Software

To dramatically reduce project development time from as much as 4-6 weeks.. to less than 4 hours

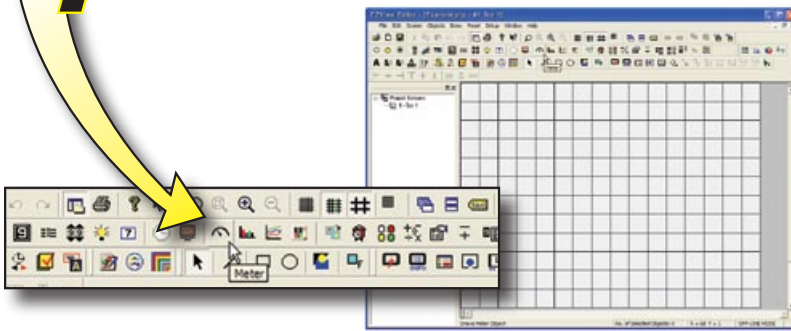
The E-ZView Editor comes with a rich set of prebuilt GUI components. It allows users to easily program visual properties, such as colors and text sizes. The GUI components are freely placed and sized to the user's requirements.

The programming software is very intuitive, requiring virtually no learning curve. Anyone familiar with Windows applications will be designing screens with in minutes. Once you have designed your screens, writing to the E-ZView is very simple and fast. You can download the project with the click of a button.

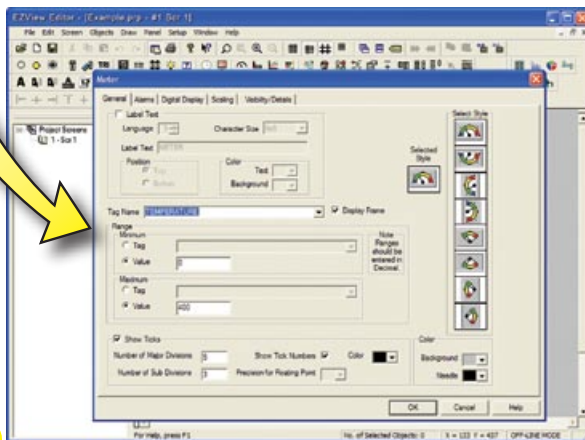
The E-ZView Editor comes with Paneldrv.lib software module for seamless integration with Dynamic C. This

## **EZ 1-2-3 steps in E-ZView Editor: = 2 minutes**

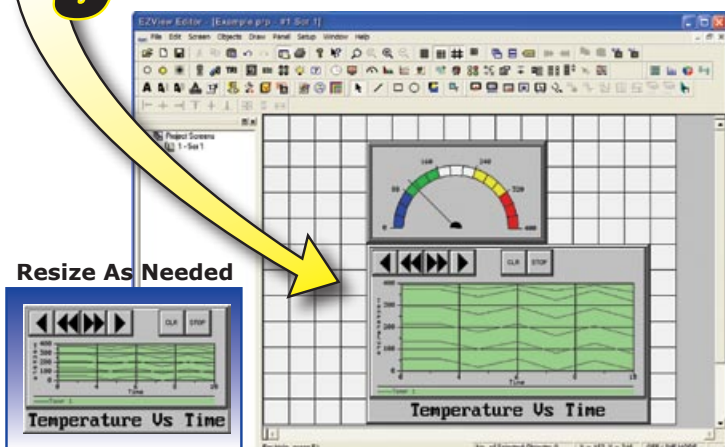
### **1 Select the Meter Object**



### **2 Fill in the Dialog Box**



### **3 Place and Size the Objects**



integration between the E-ZView and the Z-World controllers/Rabbit processors can best be demonstrated by the following example. Suppose we were to design a temperature meter, have it read its value from a thermocouple input to the Rabbit processor, and chart the value over a period of time; E-ZView Editor can do this literally in less than five minutes as shown in EZ 1-2-3 steps.

**We named it E-ZView for a reason! Virtually no learning curve required! Design this screen in about 10 minutes!!**



## **Key Features of E-ZView Editor**

- Advanced Pre-built Panel Components such as Analog Meters, PID Faceplates, Bar Graphs, Line Graphs, and much more...
- Multi-state Indicator Bitmap Buttons
- Multiple Languages including Unicode
- Math-Logic/Expressions/Multi-function Buttons, Overlapping Objects
- Alarms and Advanced Recipes
- Live Monitoring of Control Variables
- Built-in Integration with Dynamic C
- Built-in Comm. Driver for Z-World
- Resize Bitmaps within Editor
- Unique Visibility Control over Objects
- Import/Export to Excel

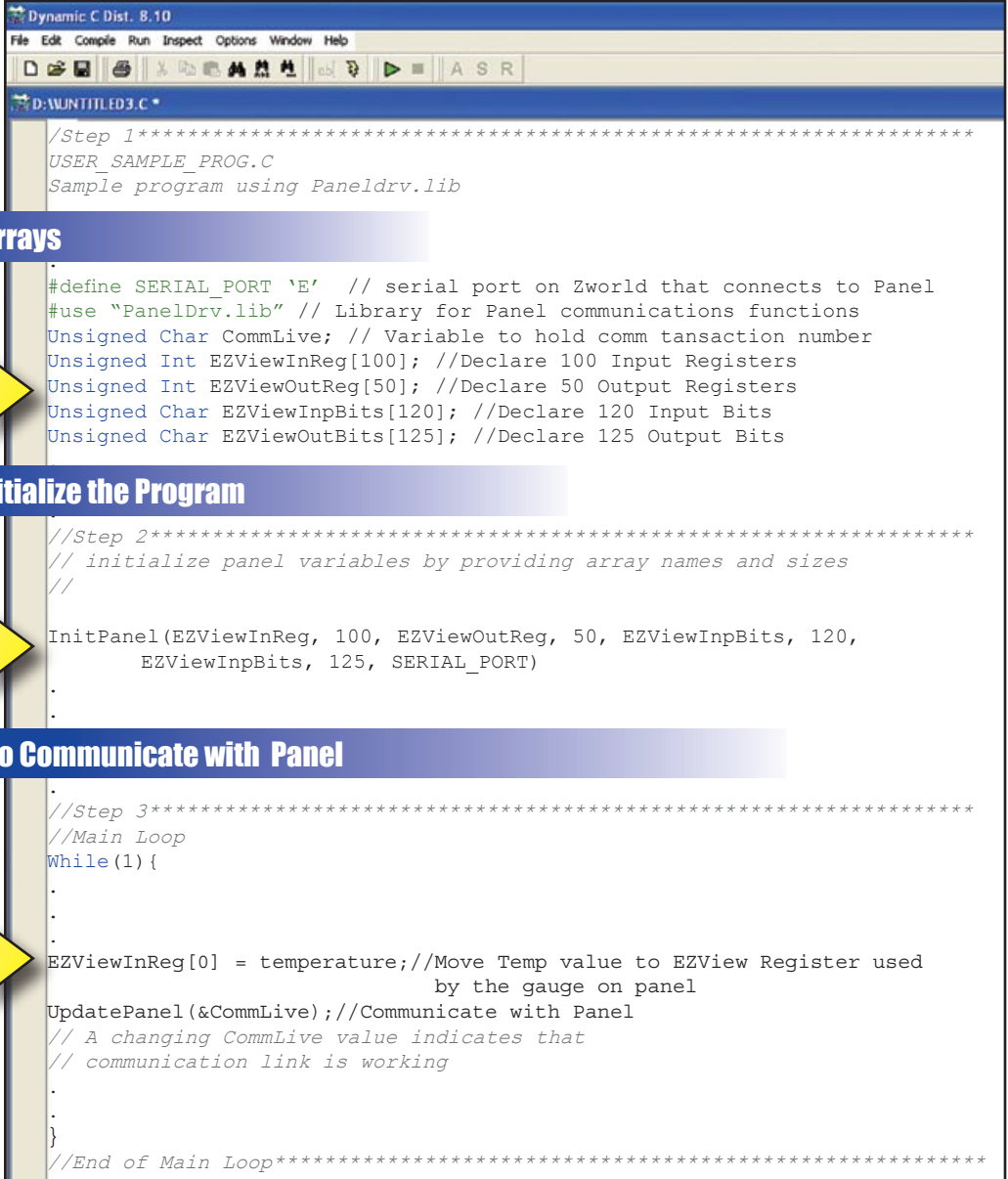
**"The Most Practical Touch Panels for Embedded Controllers"**

# Seamless Integration with Dynamic C<sup>®</sup>

Paneldrv.lib makes communication to Z-World Controllers a Snap

Registered trademark of Z-World, Davis, CA.

**EZ 1-2-3 steps in Dynamic C: = 3 minutes**



**1** Declare the EZView Arrays

```
/*Step 1*****  
USER_SAMPLE_PROG.C  
Sample program using Paneldrv.lib  
  
#define SERIAL_PORT `E' // serial port on Zworld that connects to Panel  
#use "PanelDrv.lib" // Library for Panel communications functions  
Unsigned Char CommLive; // Variable to hold comm transaction number  
Unsigned Int EZViewInReg[100]; //Declare 100 Input Registers  
Unsigned Int EZViewOutReg[50]; //Declare 50 Output Registers  
Unsigned Char EZViewInpBits[120]; //Declare 120 Input Bits  
Unsigned Char EZViewOutBits[125]; //Declare 125 Output Bits  
  
//Step 2*****  
// initialize panel variables by providing array names and sizes  
//  
InitPanel(EZViewInReg, 100, EZViewOutReg, 50, EZViewInpBits, 120,  
          EZViewInpBits, 125, SERIAL_PORT)  
  
//Step 3*****  
//Main Loop  
While(1){  
.  
.  
EZViewInReg[0] = temperature;//Move Temp value to EZView Register used  
                             by the gauge on panel  
UpdatePanel(&CommLive);//Communicate with Panel  
// A changing CommLive value indicates that  
// communication link is working  
.  
.  
}  
//End of Main Loop*****
```

**2** Call InitPanel ( ) to Initialize the Program

**3** Call UpdatePanel ( ) to Communicate with Panel

## No communication driver to write, no software to debug

E-ZView Editor comes pre-packaged with all the tools you'll need in order to link your Dynamic C project with the E-ZView. The Panel Driver Library is a fully functional tool that enables all communication between Z-World's Controllers/Rabbit Processors and E-ZView. This library requires absolutely no work and eliminates weeks and weeks of debugging. Now all data can be shared between the controller and your Operator Interface with little to no effort.

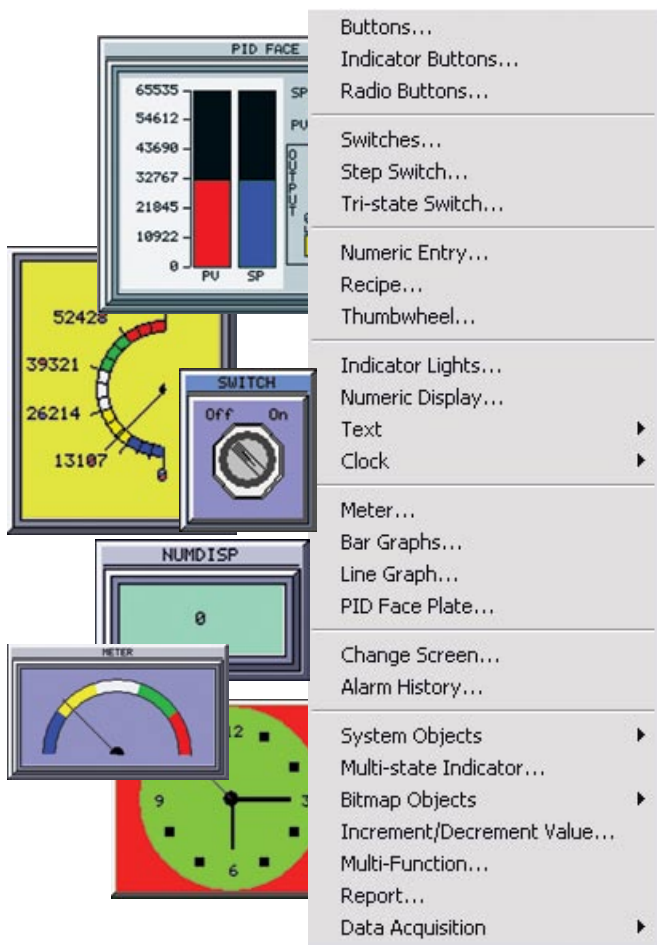
Since the use of E-ZView Editor for all practical purpose eliminates any need for software debugging, you do not need to worry about troubleshooting the E-ZView Panel user application.

**It is ready to go instantaneously!**

Visit Us at [www.E-ZView.net](http://www.E-ZView.net)

(800)711-5109

# E-ZView Editor Key Features



## Dazzling Graphics & 256 Colors

Though extremely easy to configure, these touch panels are much more than push-button & pilot-light replacements. These panels provide high-end panel components & compelling real-life graphics that you would normally expect only on an expensive PC-based software HMI. Additionally, with 128 colors, blinking abilities, and extensive bitmap support, the unit offers dazzling graphics that would please any discerning user. The E-ZView panels, particularly TFT, have the widest viewing angle for great visibility from all corners.

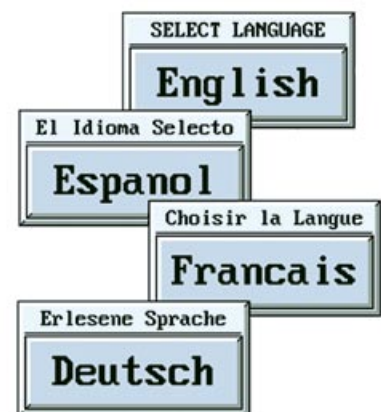
## Pre-Built Panel Components

In addition to pushbuttons, indicator lights, numeric entry and displays, the EZView offers panel components such as Analog Meters, PID Faceplates, Bar Graphs, Trend Graphs, Alarms, Recipes, Radio Buttons, Thumbwheels, a variety of Switches, and a rich library of Bitmaps.

Also, the user can select from a palette of 128 rich colors for all these components. Each color can be selected to blink in order to create components that will grab the operator's attention.

## Multiple Languages

With E-ZView's multiple language capabilities including Unicode for Chinese characters, you can now program the text for Panel components in up to 9-different languages. This means English reading operators can work with the panel in English, while the Spanish proficient operators can work in the Spanish language on the same panel. Also, with up to 9 different languages, OEMs exporting to other countries can develop programs to cover many of the commonly used languages.



## Multi-state Indicator & Bitmap Buttons

The multi-state indicators allow you to visualize process conditions, such as three states of a traffic light. E-ZView also offers Bitmap-based multi-state indicators, where you can use up to 256 bitmaps to indicate 256 different conditions. The bitmaps allow you to design very intuitive screens.

**"The Most Practical Touch Panels for Embedded Controllers"**

# E-ZView Editor Key Features

## Same Feature Set & Programming Across all Sizes & Models

All models have the same feature set and are programmed using a single, **FREE SOFTWARE**.

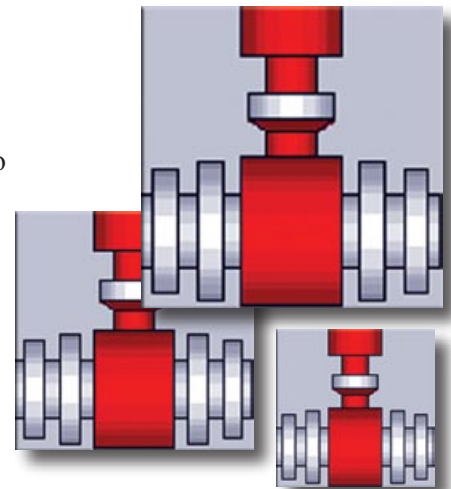
You can very easily switch from smaller panels to large panels and vice versa.



## Resize Bitmaps within Editor

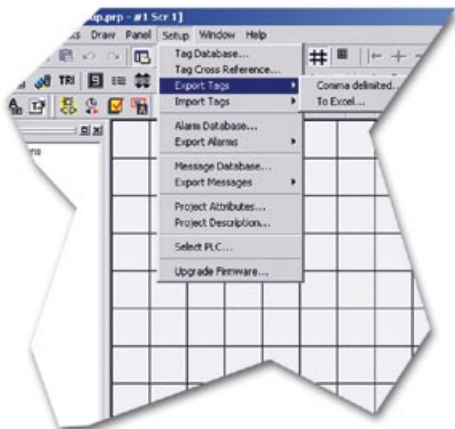
E-ZView uses vector-based designs for the panel components & imported bitmaps. This allows the user to scale an object without limits. There is no distortion! This saves you from having to go to photo editing software to scale the bitmaps.

In addition to distortion-free scaling, the vector based designs use E-ZView memory very efficiently, allowing almost 500 screens of reasonable complexity to fit within 512 KB of memory.



## Programming over Ethernet

With our optional Ethernet module, you can program the E-ZViews over Ethernet running standard TCP/IP protocol. You can even do the online programming over Ethernet, allowing you to make modifications to installed E-ZViews from the convenience of office (which may be half way across the world).



## Import/Export to Excel

E-ZView allows you to export data from several objects to a PC network. You can export data from Trend Graph, FIFO Tables and Alarm History. You can also import tag and message data from an Excel Spreadsheet to the panel.

# Much More than an Operator Panel

## Data Acquisition

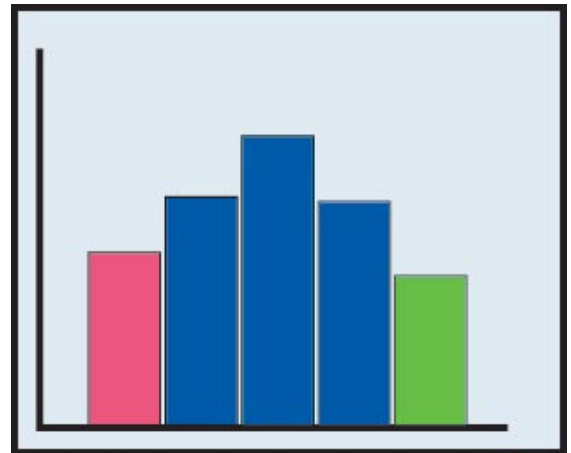
The E-ZView is the only product in its class that offers Data Acquisition and SPC capabilities. Data can be acquired periodically, or based on an event. The acquired data is stored in a FIFO (First-in-first-out) buffer of user programmed length. The data so acquired can be used for SPC & be read over a serial or Ethernet port.

## Statistical Process Control (SPC)

E-ZView can perform a variety of Statistical computations on the data stored in the FIFO, which is useful for SPC (Statistical Process Control).

The EZView performs and displays the following computations:

- Mean or X-bar
- Range
- Mode
- Median
- Min-Max
- Cpk

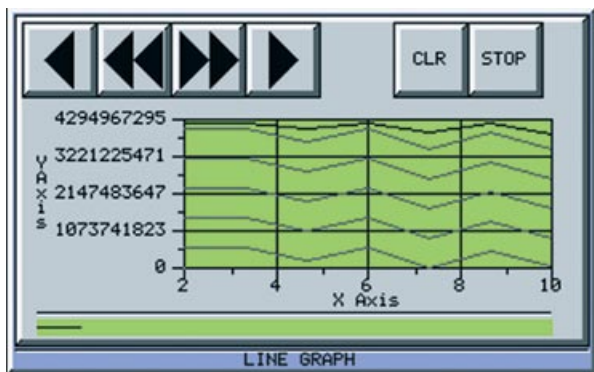
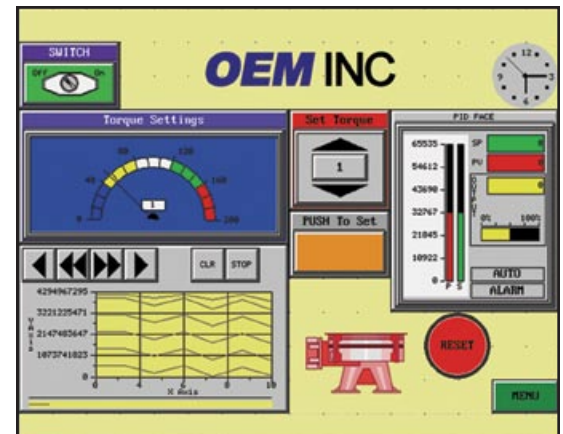


## Machine Diagnostics

With its extensive graphics, multi-state bitmaps, alarming & messaging capabilities, E-ZView provides graphical machine diagnostics to quickly trouble-shoot the operation of machine/process.

## Monitor Tags

The E-ZView editor allows you to monitor tag values. You can read as well as write to tags in the Embedded controller. This allows you to use E-ZView editor to monitor controller variables for diagnostic purpose (or any other purpose) without launching Dynamic C.



## Line Graph

E-ZView offers you a powerful trend or line graph feature. One trend graph object can track up to 6 variables. You can have any number of such objects in your program. Readings are time or event-based, and are taken even if the graph is not on a currently displayed screen.

In addition, the graphs allow you to scroll back & forth; moreover, the graph points can be read back by a PC, and exported to Excel spreadsheets.

## Automatic Data Collection Utility

E-ZView offers a utility to collect data from the panel. The utility that runs on a PC can collect data using Panels programming port.

**"The Most Practical Touch Panels for Embedded Controllers"**

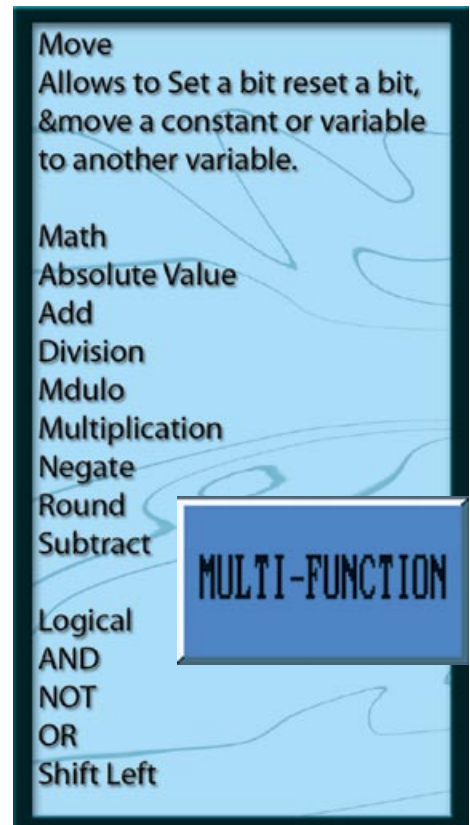
# Simple to Use Yet Feature Rich

## Math-logic/Expressions/Multi-function Buttons, Overlapping Objects

In addition to allowing the overlapping of touch objects, E-ZView offers a sophisticated control, called the Multi-function button. As the name implies, this button allows you to perform multiple functions, including Mathematical and Logical operations, with the touch of one button. For example, you can set/reset multiple bits & transfer constants or variables or expressions to tags. Remarkably, this benefit allows a user to perform up to 20 operations with one button (and several buttons can be overlapped). The E-ZView's GUI provides for the use of a scripting language also called Expressions. This gives the programmer extreme flexibility in displaying text, alphanumeric data, and bitmaps.

## Alarms and Alarm History

E-ZViews offer a sophisticated Alarm system. It allows you to monitor events (bits), and values (registers). The values can be monitored for a variety of conditions ( $=$ ,  $>$ ,  $<$ , in/out of range). The alarms can be selectively displayed, printed and/or logged. Alarm history can be stored inside the E-ZView as well as exported to Excel.



## Flash Card & Flash-Firmware

E-ZView uses flash memory for its firmware. This allows you to quickly upgrade the firmware in the field. You do not have to un-install the units, or send it to factory for any firmware upgrade.

**In addition, E-ZView supports an optional flashbased plug-in module. This module can be used to back up the user program and provide program portability. For example, OEMs can use the convenience of the plug-in module to distribute upgraded versions of their programs to customers, and end-users can modify or upgrade programs without having to use computers.**

## Visibility Tags

Every object in the E-ZView is equipped with a patent-pending visibility control variable. This feature allows the E-ZView to conserve precious display area. The same display space can be used for multiple purposes under the control of the Embedded controller.

## Cut, Copy & Paste, Pick and Apply Attributes

E-ZView Editor allows any objects or a group of objects to be cut, copied and pasted freely. In addition, users can pick the style of one object and apply that to other similar objects; for example if you have 20 push buttons on a screen, and you would like to change the text sizes and colors of all the push buttons to a different value, you can do so with a single click.

Visit Us at [www.E-ZView.net](http://www.E-ZView.net)

(800)711-5109

# Unique ON Line Programming

## For Further Reduction in Project Development Time

### Eliminate Cable Swap, Power Cycling/Resetting, Code Compilation and Downloads

In addition to the advanced features described earlier, the E-ZView has a unique “On-Line Programming” feature not found in any other similar product in the market. **This patented unique feature greatly reduces project development time to further reduce time to market.**

Typically, when developing a project, even if a small change is made to the program, a lot of time is wasted in swapping out cables, power-cycling, compilation of new code, and downloading the changed project to the operator interface panel. In addition while all this is going on, the machine and the control system is not operational.

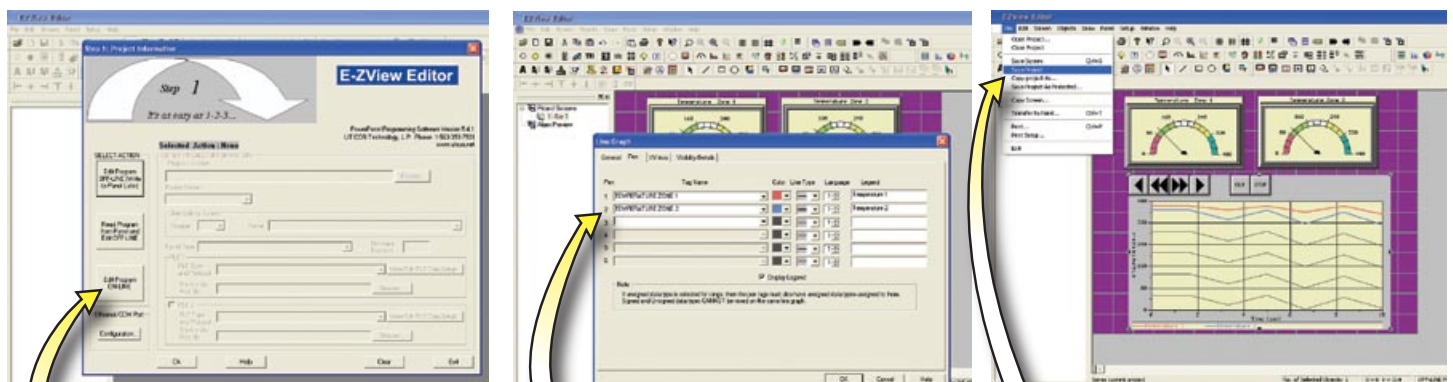
The online feature of E-ZView eliminates all this hassle. Just like Dynamic C, debugging the Graphical User Interface (GUI) can occur while the application is running on the target Embedded controller.



Continuing with the example of the Temperature Meter and Line Graph, suppose you needed to monitor two temperatures instead of just one. After making the necessary changes in your Dynamic C project, you can easily add (as shown below) a second meter and line graph without ever having to shutdown the controller application.

## EZ as 1-2-3

**Add 2nd Meter and Line Graph without having to stop running the application**



**1** Choose “Edit Program On-Line” when opening a project to edit/modify the E-ZView program online.

**2** To add the second temperature, simply double click the line graph to open the dialog box; add the second tag name, and press OK.

**3** Save your project and instantly your changes are visible on the panel while continuing to collect data the entire time.

**“The Most Practical Touch Panels for Embedded Controllers”**

# More Features...

## Password Protection

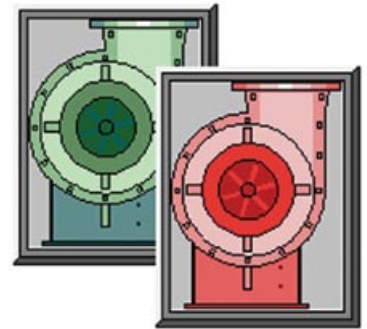
Most functional objects in the E-ZView have password protection built-in for up to eight different user groups. Simply choose the group or level of protection and enter the password. The Password protection, thus, is available not only at the screen level, it goes down to the individual object level. For example, two different objects in the same screen can have two different passwords.

## Recipe

The Recipe object allows you to write preset values of up to 20 registers in the E-ZView panel with the click of a button. These values may be transferred from the E-ZView registers to the Embedded Controller to change the process.

## Dynamic Bitmaps

The Dynamic Bitmap allows you to create and stack objects on top of each other for a true dynamic representation. The bitmap that is activated by the panel or the control program will be the one that is active or on top. For example, you could create a green blower and a red blower and stack them on top of each other. If the process is running and the blower is in operation, the green one will be shown. If it was off, the red one would be shown.



## Fast Response to 192 Touch Cells

The E-ZView panels show an extraordinarily quick response (about 1/2 second) to touch cells, organized in 16x12 matrix.



## Down Time Monitoring

E-ZView panels have a built-in Down Time monitoring object. Each time the machine/process goes down, the E-ZView stamps the current time and date and logs it in along with the reason for going down. The down time history is stored inside the panel and can be exported to Excel.

## Spanish Language GUI

The E-ZView panel as well as Editor are also available in the Spanish language. Check factory for availability.

## E-ZView Panels, HALT-HASSed and “Built Like a Tank”

AVG panels go through HALT (Highly Accelerated Life Test) to identify and eliminate components/areas likely to fail prematurely. HALT/HASS (Highly Accelerated Stress Screening) process simulates product life over the next 20 years of operation.

# E-View Specifications

| Features                   | 6" White on Blue<br>6" Mono<br>6" Color<br>6" TFT  | 8" Color<br>8" TFT                                  | 10" TFT                                     | 15" TFT                                      |
|----------------------------|--|---|---|--|
| Display                    | <b>Blue:</b> 4.72" x 3.5"<br>4 Shades<br><b>Mono:</b> 4.72" x 3.5"<br>16 Grey Shades<br><b>Color / TFT:</b> 4.65" x 3.5"<br>128 Colors<br>256 Blinking | 6.65" x 5.024"<br>128 Colors<br>256 Blinking        | 8.31" x 6.22"<br>128 Colors<br>256 Blinking | 12.02" x 9.02"<br>128 Colors<br>256 Blinking |
| Screen Pixels              | 320 x 240  | 640 x 480   |   |  |
| Operating Temp             | 0°- 50°C<br>TFT: -10°- 60°C  | <b>Color:</b> 0°- 45° C<br><b>TFT:</b> -10° - 60° C | -10° - 60° C                                | -10° - 60° C                                 |
| Ext Dimensions             | 8.04 x 6.140"x 2.430"  | 10.894" x 8.748" x 2.289"                           | 13.56" x 10.59" x 2.289"                    | 16.100"x12.336"x4.208"                       |
| Panel Cutout               | 7.54" x 5.64"  | 9.25" x 7.10"                                       | 11.93" x 8.94"                              | 14.96"x11.68"                                |
| Display Brightness         | <b>Blue / Mono:</b> 140 Nits<br><b>Color / TFT:</b> 180 Nits   | <b>Color:</b> 140 Nits<br><b>TFT:</b> 180 Nits      | 200 Nits                                    | 250 Nits                                     |
| Touch Screen               | 192 resistive touch cells (16 x 12 matrix) except 6" White on Blue model has 48 touch cells (8x6)  |   |   |  |
| Weight                     | <b>Blue / Mono:</b> 1.4 lbs<br><b>Color / TFT:</b> 1.5 lbs   | 2.2 lbs   | 3.95 lbs                                    | 8.9 lbs                                      |
| Power Input                | 20-30VDC 15 Watts @ 24VDC  | 20-30VDC 16 Watts @ 24VDC                           | 20-30VDC 18 Watts @ 24VDC                   | 20-30VDC 33 Watts @ 24VDC                    |
| User Memory                | 512Kb System RAM   |   |   | 1Mb System RAM                               |
| RAM Modules                | 512Kb RAM Module, 1Mb RAM Module   |   |   |  |
| Flash Modules              | 512Kb Flash Module, 1Mb Flash Module   |   |   |  |
| Agency Approval            | UL, CUL, CE  |   |   |  |
| Battery Backup             | YES, except for 6" White on Blue model   |   |   |  |
| Humidity                   | 10-95% RH, noncondensing   |   |   |  |
| Electrical Noise           | NEMA ICS 2-230 showering arc ANSI C37.90a-1974 SWC Level C Chattering Relay Test   |   |   |  |
| Withstand Voltage          | 1000VDC (1 minute), between power supply input terminal and protective ground (FG)   |   |   |  |
| Insulation Resistance      | Over 20 M Ohms, between power supply input and terminal and protective ground (FG)   |   |   |  |
| Vibration                  | 5 to 55Hz 2G for 2 hours in the X, Y, and Z axes   |   |   |  |
| Shock                      | 10G for under 12ms in the X, Y, and Z axes   |   |   |  |
| Number of Screens          | Up to 999 limited by memory only   |   |   |  |
| Screen Saver               | Backlight Off  |   |   |  |
| Real Time Clock / Calendar | Built into all panels except 6" White on Blue model  |   |   |  |
| Password Security          | YES  |   |   |  |
| Serial Communications      | Embedded port: RS-232/RS-422/RS-485 15-pin D-sub (female)<br>Download/Program port: RS-232/RS-422/RS-485 9-pin D-sub (female)                          |   |   |  |

**"The Most Practical Touch Panels for Embedded Controllers"**

# E-ZView for Other Embedded Controllers

## Product Customization , Both Hardware and Software

AVG's vertical integration and the fact that we have all engineering disciplines, hardware, firmware, and software, as well as state of the art manufacturing right here in Bettendorf, IA and Carol Stream, IL gives us the ability to provide product customizations in a very short time. This has earned us the reputation of "Cheetah-like" response.

Even though this E-ZView brochure is dedicated to the Z-World Embedded Controllers, we can develop communication drivers for other Embedded Controllers in no time.

We can also incorporate an OEM code in the E-ZView Touch Panels to protect your software/application and your after sale market.



## E-ZView in different mechanical packages such as NEMA4x, Class I, Div II or Stainless Steel

E-ZView is available in a wide variety of mechanical packages other than cataloged in this brochure. These packages include among others, NEMA4X, Class I, Div II, Stainless Steel or FDA approved plastic bezels.



**If your application requires a different driver, a different mechanical package or even a less expensive Text display, contact our sales department at 1-800-511-7109 or [EZViewsales@avg.net](mailto:EZViewsales@avg.net).**

# E-ZView

## MODELS



Free Programming Software on Web

### 6" White on Blue

- 4.72" x 3.5" 4 shades
- 140 nits
- 320 x 240
- 20-30VDC 15 Watts @24VDC
- NEMA4 Bezel



**ZV-S6B**  
Single: \$549  
qty. 200: \$459

### 6" Monochrome

- 4.72" x 3.5" 16 shades
- 140 nits
- 320 x 240
- 20-30VDC 15 Watts @24VDC
- NEMA4 Bezel



**ZV-S6M**  
Single: \$699  
qty. 200: \$599

### 6" STN Color

- 4.65" x 3.5" 256 colors
- 180 nits
- 320 x 240
- 20-30VDC 15 Watts @24VDC
- NEMA4 Bezel



**ZV-S6C**  
Single: \$799  
qty. 200: \$699

### 6" TFT Color

- 4.65" x 3.5" 256 colors
- 180 nits
- 320 x 240
- 20-30VDC 16 Watts @24VDC
- NEMA4 Bezel



**ZV-T6C**  
Single: \$999  
qty. 200: \$899

### E-ZView Accessories

#### Programming Cable

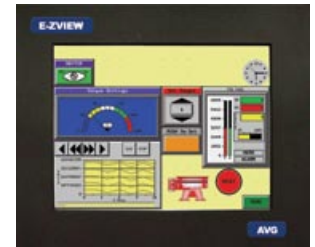
**ZV-PGMCBL**  
\$49

#### Controller Cable

**ZV-CONCBL**  
\$49

### 8" STN Color

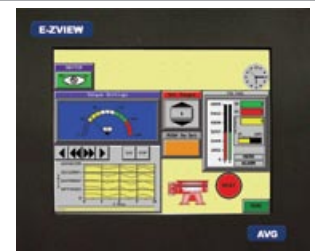
- 6.65" x 5.024" 256 colors
- 140 nits
- 640 x 480
- 20-30VDC 16 Watts @24VDC
- NEMA4 Bezel



**ZV-S8C**  
Single: \$1099  
qty. 200: \$999

### 8" TFT Color

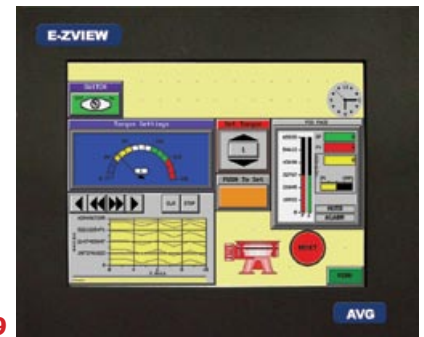
- 6.65" x 5.024" 256 colors
- 180 nits
- 640 x 480
- 20-30VDC 16 Watts @24VDC
- NEMA4 Bezel



**ZV-T8C**  
Single: \$1399  
qty. 200: \$1299

### 10" TFT Color

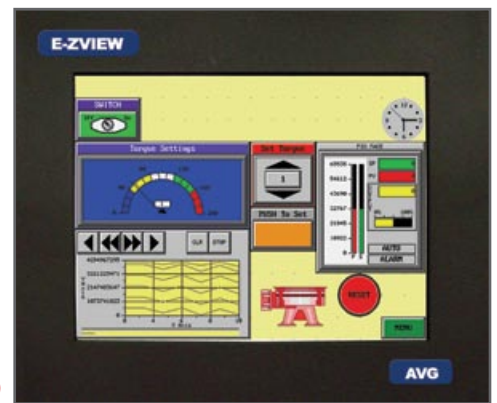
- 8.31" x 6.22" 256 colors
- 200 nits
- 640 x 480
- 20-30VDC 18 Watts @24VDC
- NEMA4 Bezel



**ZV-T10C**  
Single: \$1749  
qty. 200: \$1599

### 15" TFT Color

- 12.02" x 9.02" 256 colors
- 250 nits
- 640 x 480
- 20-30VDC 33 Watts @24VDC
- NEMA4 Bezel



**ZV-T15C**  
Single: \$2499  
qty. 200: \$2299

Append "-E" to part # for Ethernet Programming Option

Add: Single: \$199  
qty. 200: \$149

### Complete Development System:

Order the relevant Z-World development kit along with the desired E-ZView Panel, Programming and Controller Cables

T: 1.800.711.5109  
(Mon-Fri, 8:00 a.m.-5:00 p.m., Central Time)

F: 563.359.9094

E: EZViewsales@avg.net

www.E-ZView.net